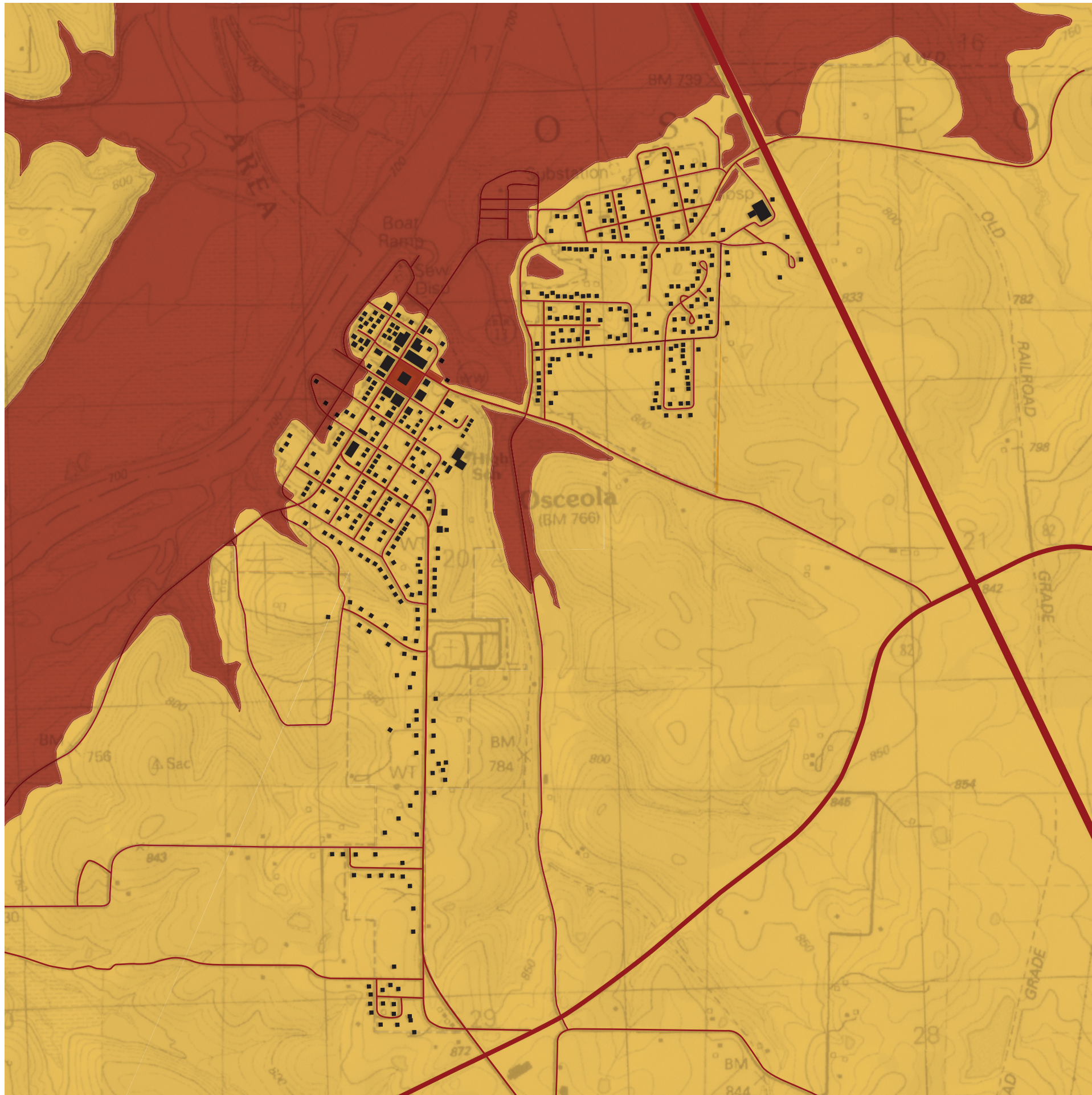


Osceola

jurisdiction



Private and Public

The majority of properties within Osceola are privately owned, while roads, parks, civic institutions and water fronts are public property controlled by the City of Osceola, St Clair County, MoDOT, and the US Army Corps.

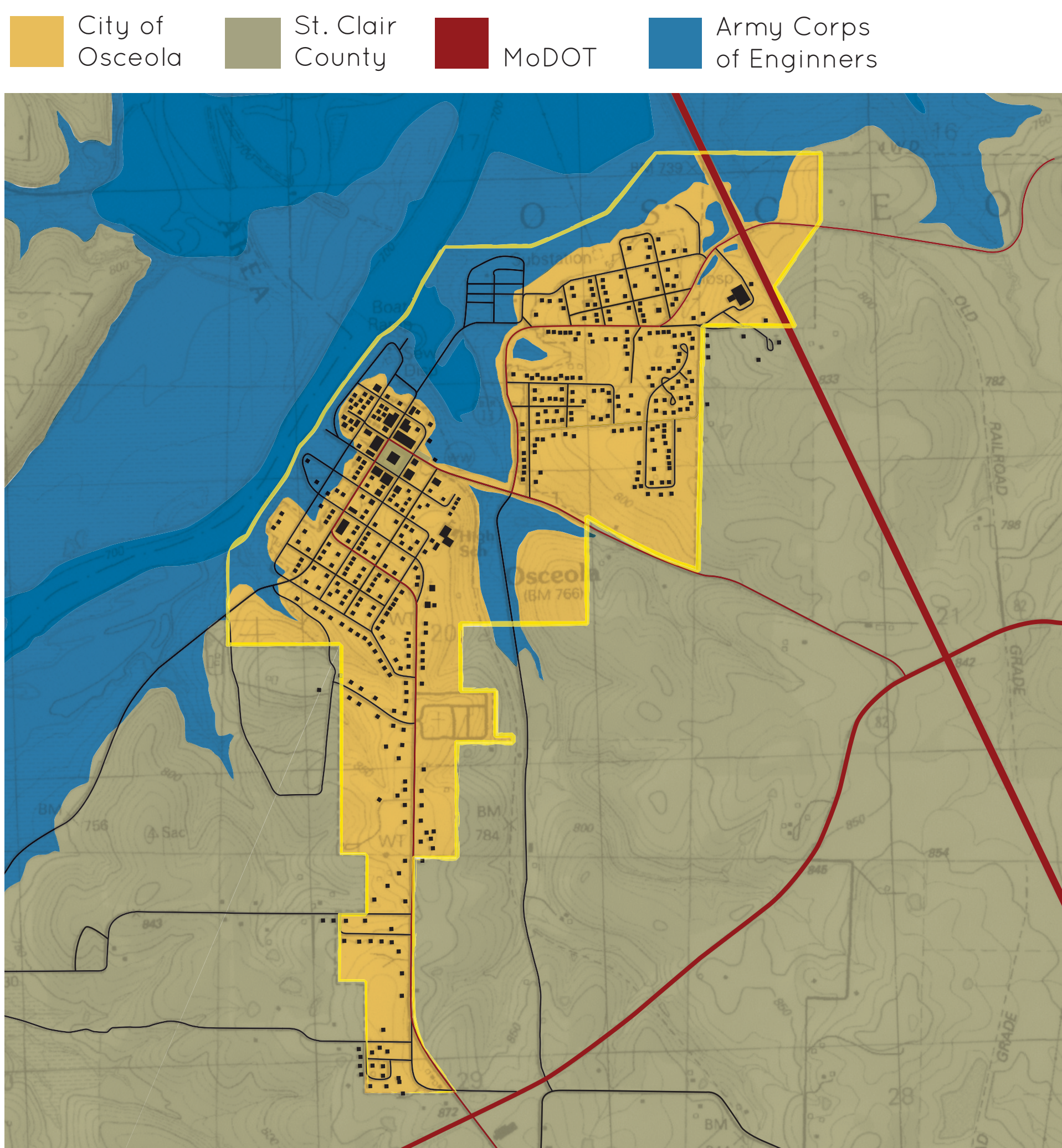
Boundaries



The city of Osceola is responsible for the city's road system as well as public buildings such as city hall, the swimming pool, and the sewage treatment plant within the city limits.

St. Clair County

St. Clair County controls two major institutions within the city of Osceola, the county courthouse, public square and the county jail. The courthouse holds court hearings every Thursday, and the county jail, located on the southeast of the corner of the square, is a major revenue source for the county.



MoDOT is responsible for maintenance on State Highway WW and 13. WW is the major artery leading into and through Osceola, and as of June 2010, portions of WW through Osceola were repaved at a cost of \$2.8 million. Also, the widening of State Highway 13, bypassing Osceola to the east, to a four lane divided highway was completed within the last few years.



US Army Corps of Engineers®

The U.S. Army Corps of Engineers owns and maintains Harry S. Truman Lake and the land up to an elevation of 740 feet, the maximum capacity of the lake, plus a 250 foot right of way. Currently, there are areas provided by the Army Corps for recreation purpose such as the boat ramp and parking, the park, and Osceola campground (RV Park). In the last few years, a foot bridge linking the square to the Osceola campground was installed, but due to flooding can be unusable.



Key Points

- Majority of land is private.
- Public space is controlled by four government agencies.
- Government jurisdictions overlap.
- MoDOT is responsible for state highway WW through Osceola.
- US Army Corps of Engineers is responsible for Harry S. Truman Lake.

