

Osceola

land use

The buildings in Osceola can be broken down into four different categories: institutional, residential, commercial, and undeveloped. The map on the right shows the majority of Osceola's buildings and how they fit into each of these categories.

The institutional buildings are spread throughout the city fairly evenly. These are shown on the map by numbers one through seven.

Residential areas comprise the majority of the town of Osceola, especially its southern part. The commercial district is located on a square that surrounds the county courthouse. Many of the storefronts on the square are empty; however, there are still a few businesses including a historical hotel, furniture store, bank, and gas station. This area is the heart of the town for it is on this square that Osceola holds all of its festivals, parades, and community events. When there are no events taking place the square is transformed back into a vacant stretch of weathered buildings and empty streets, except for court days when the town is bustling with lawyers and their defendants. Most of the undeveloped land in Osceola is located along the riverfront on the north side of town. This land is sparsely used with the exception of the paddle fish season and camping.

■ Region of Interest

■ Institutional

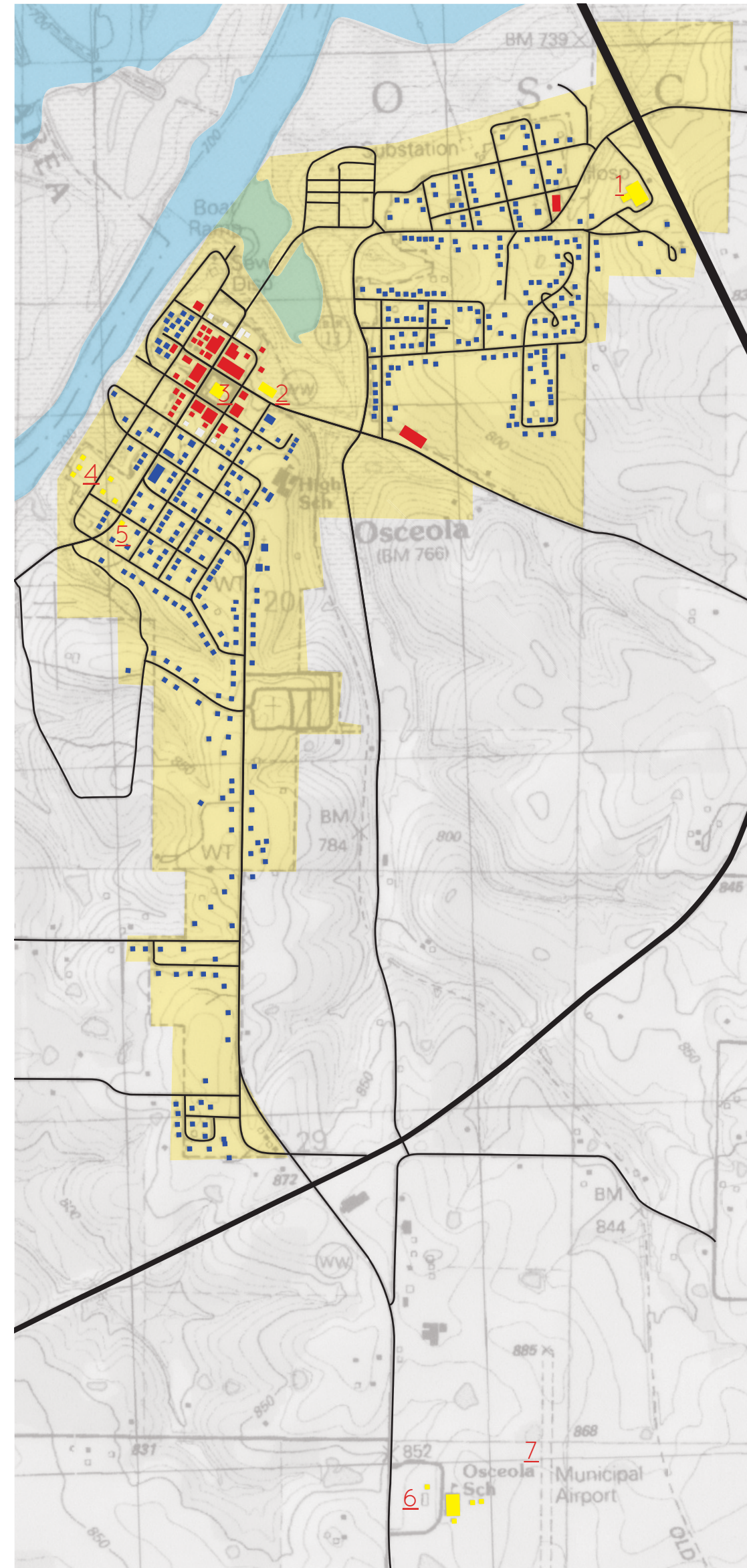
- 1 Hospital
- 2 Jail
- 3 Courthouse
- 4 Park
- 5 Church
- 6 High school
- 7 Airport

■ Residential

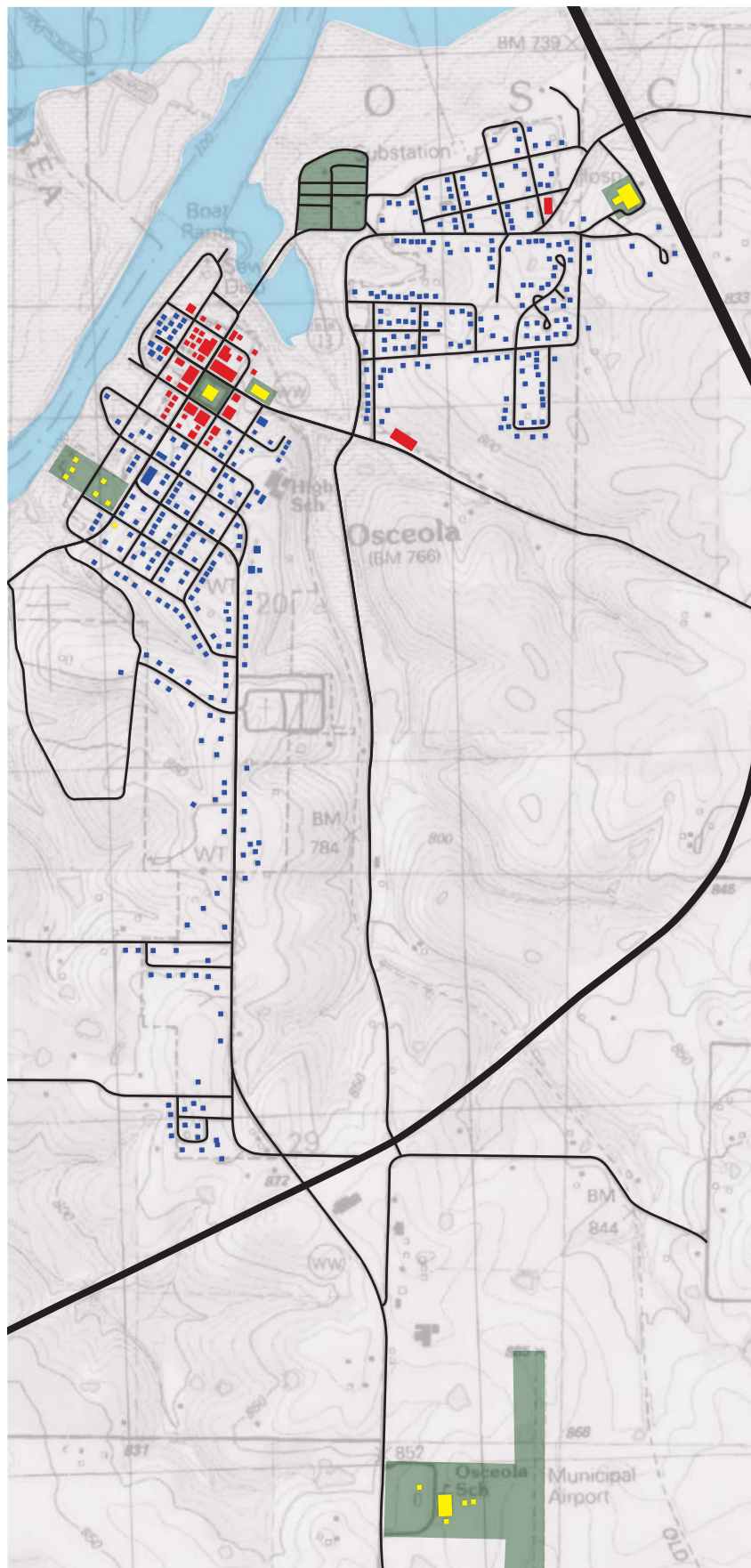
■ Commercial

■ Undeveloped

Community Layout

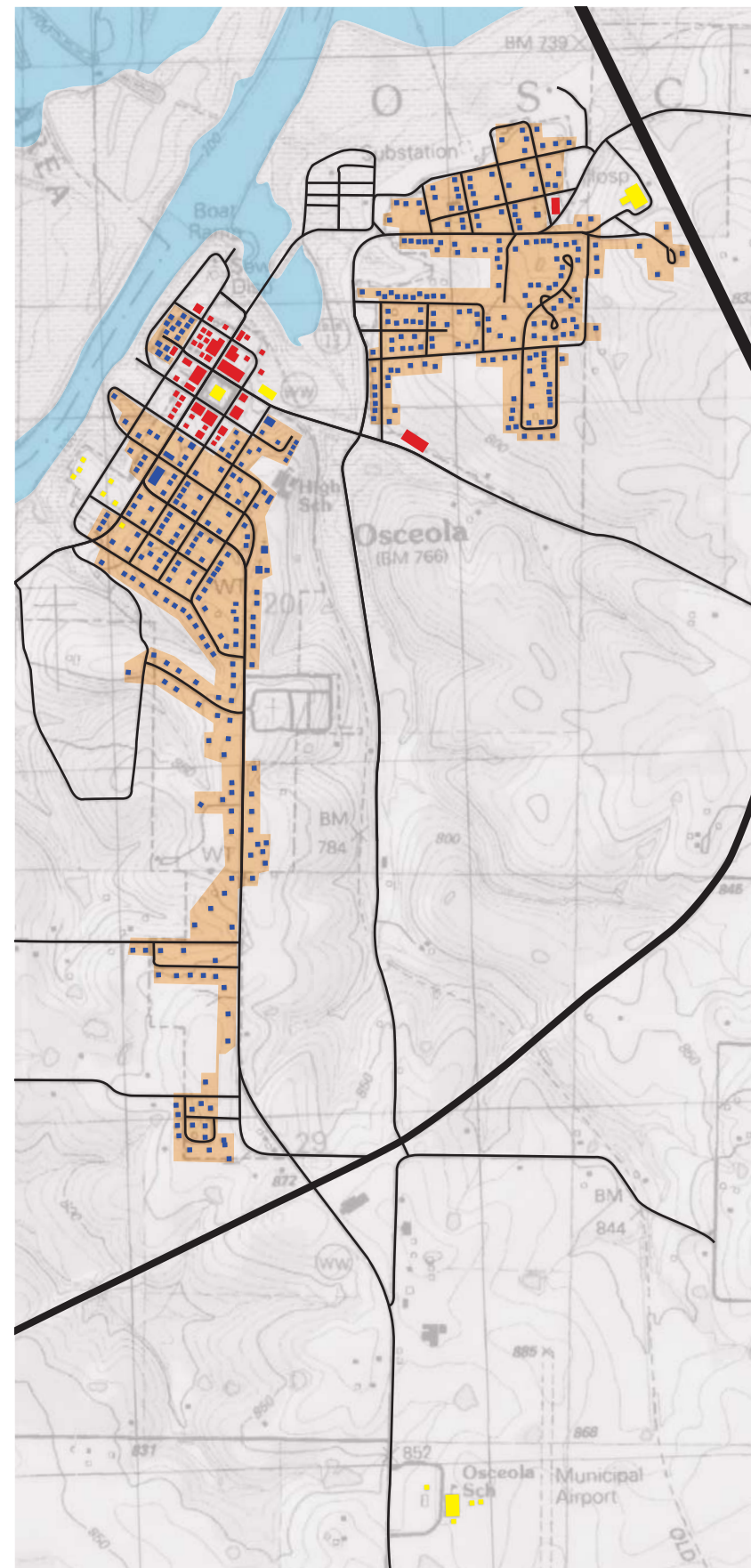


■ Institutional Zone



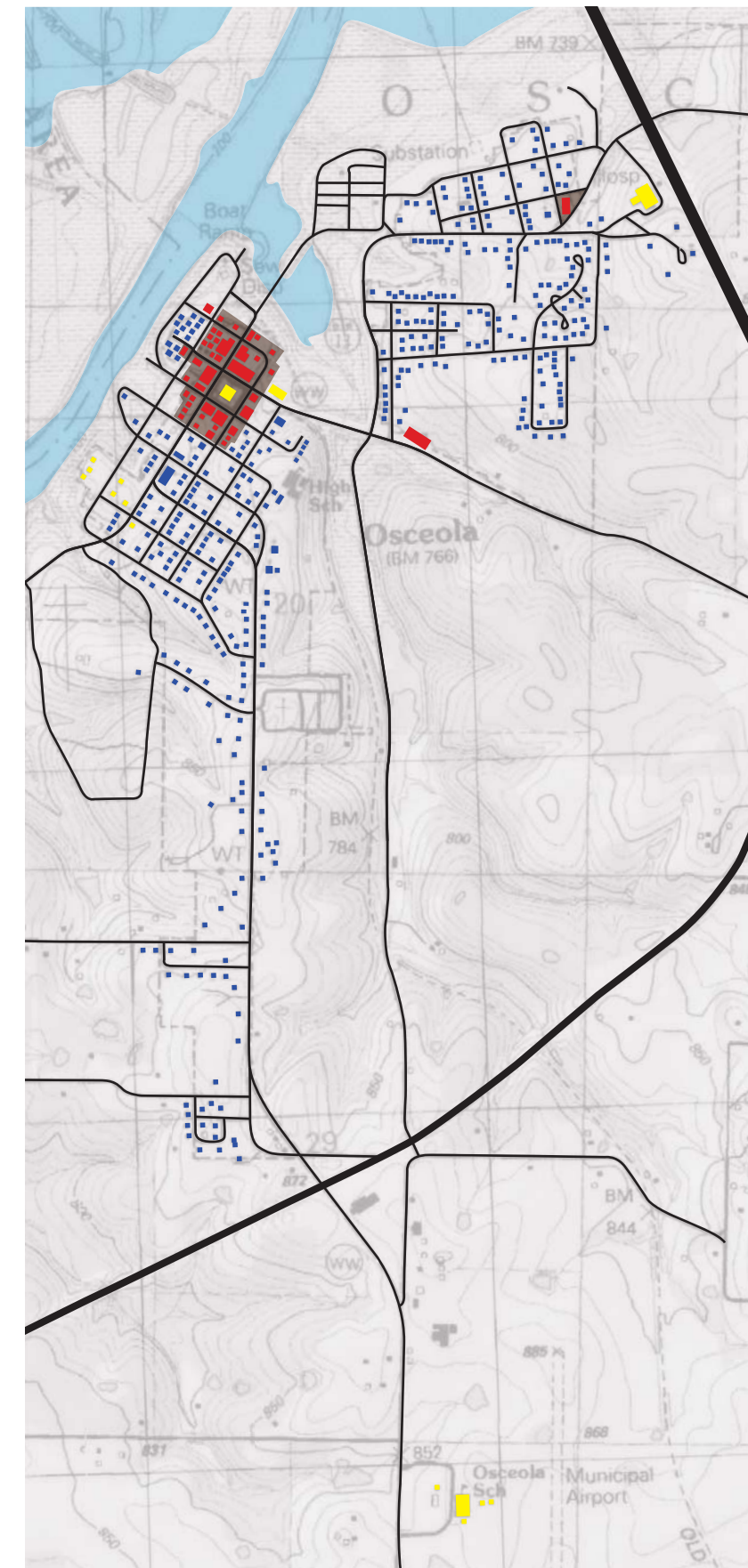
The institutional zones are shown in green. They have some proximity to the town center, but the school for example is detached.

■ Residential Zone



The residential zones are shown in orange. Osceola has two main residential zones, one to the south west and the other to the north east, that are bisected by Hwy WW.

■ Commercial Zone



The commercial zones are located primarily on the square in the town center. There is also a Dollar General on the southern entrance into town as well as a gas station on the east entrance.

Key Points

- Frontage on the river reflects the beginning of the town.
- Explore ways to reconnect with the town's historical roots.
- The town is bisected by the flood plain.
- The land between the town and Highway 13 is undeveloped.
- Osceola has no presence on Highway 13.
- Frontage along the river is undeveloped.

