

Osceola

live, work, play

Principles for Smart Growth and Mixed-Use Communities

- Medium to high density land uses so that everything within the city is within walking and cycling distance
- Mixed land use with offices, shops, businesses and community facilities on the main areas of use surrounded by residential development.
- Considerable landscaping, including gardens on top of buildings and on balconies and attractive gardens in the public spaces.
- A mixture of public, private or cooperative housing with an emphasis wherever possible on families and hence large internal dwelling spaces and spacious community areas.
- Extensive provision for children, such as playgrounds, and other safe and creative kinds of play space in sight of dwellings.
- Recreational opportunities such as sporting facilities (swimming pool, tennis courts, indoor sports etc).
- Community facilities such as schools, libraries, child care centers, aged centers, recreation centers and in some cases small urban farms.
- Special areas for secure storage of equipment such as boats.



Residential smart growth



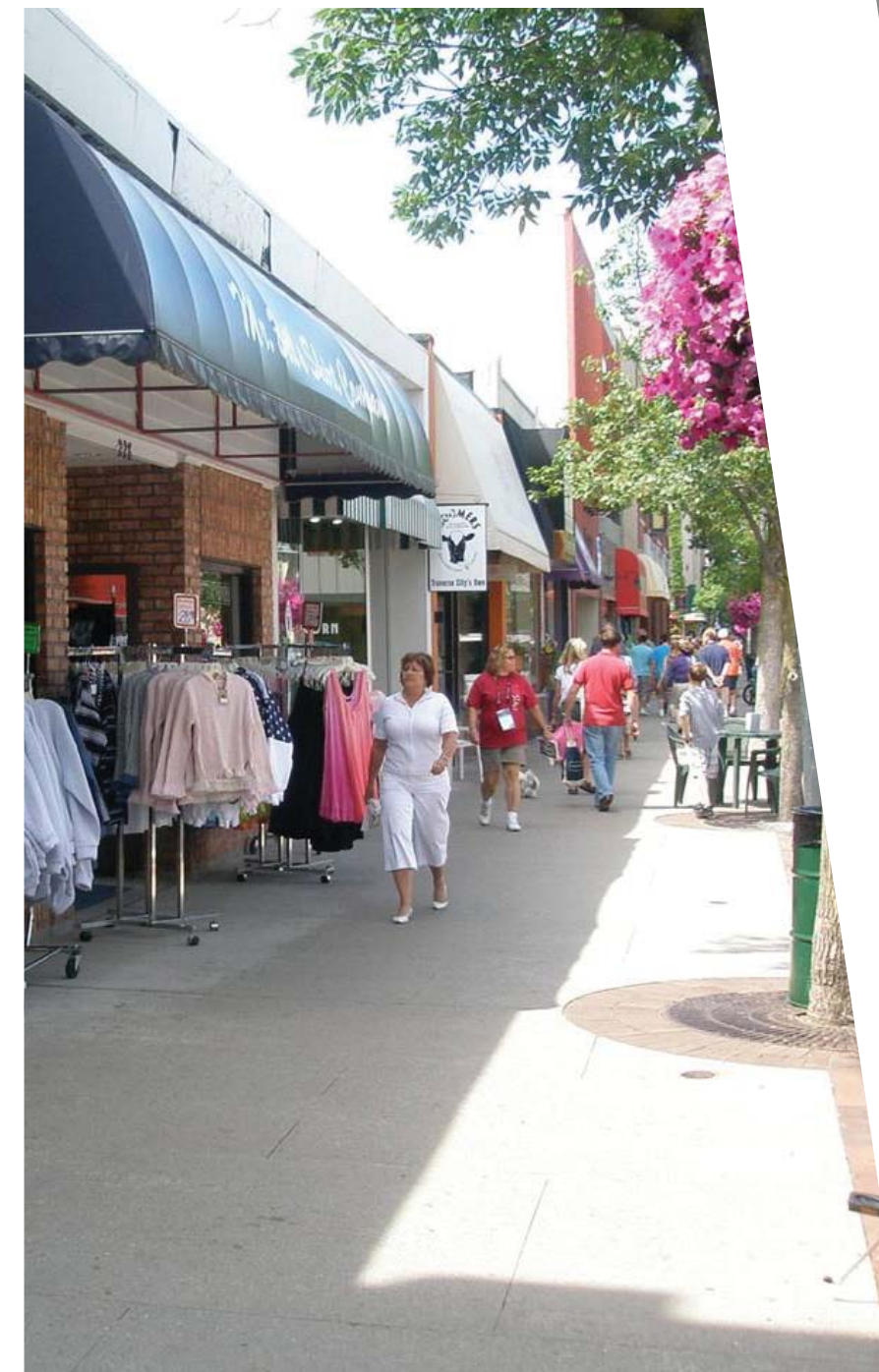
Transformed green space



Sidewalks structured to facilitate movement



Crosswalks providing safety



Low density urban retail



Crosswalks providing safety



Sidewalks and bike paths for recreation



Sidewalks inviting walkability



Crosswalks providing safety

- Pedestrian and cycle links with car parks placed underground and traffic calming on peripheral roads. The aim should be a traffic-free, people-orientated environment, not one designed around the space demands of surface car parks.

- Public spaces with strong design features (water, street furniture, sculptures, playgrounds).

- Prominent sites at the termination of street vistas or in the neighborhood center are reserved for civic buildings. These provide sites for community meetings, education, and religious or cultural activities.

- Small playgrounds accessible to every dwelling — not more than a tenth of a mile away.

- The neighborhood has a discernible center. This can be a square, a green space, or sometimes a memorable street corner. A transit stop would be located at this center.



Key Points

- More livable communities
- Community identity
- New social opportunities
- More active communities
- Increased usable green space
- Safety for residents and children
- Increased movement in the city but with a slower momentum

